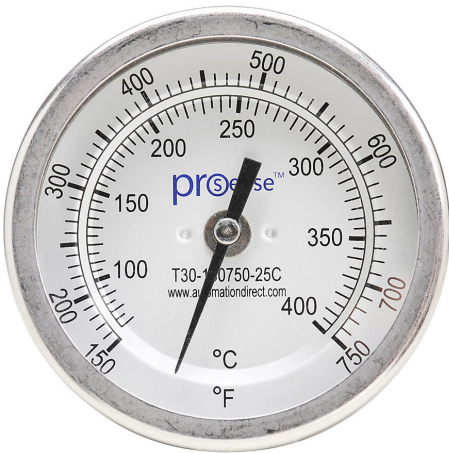


T30-150750-25C Cut Sheet



ProSense bi-metal dial thermometer, 3in diameter, 2-1/2in insertion length, 150 to 750 deg F/70 to 400 deg C, 1/2in male NPT process connection, center back mount.

For complete product information, please see this item on our store at the following link:



<https://www.automationdirect.com/pn/T30-150750-25C>

Technical Specifications

Brand	ProSense
Item	Bi-metal dial thermometer
Diameter	3in
Insertion Length	2-1/2in
Scale	150 to 750 deg F/70 to 400 deg C
Process Connection	1/2in male NPT
Mounting	Center back

Agency Approvals

UL Listed File #	None
UL Recognized File #	None
UL Hazardous File #	None
CE	None
CSA File #	None
RoHS Status	No
EU REACH	View EU REACH document

Dimensional Drawings



2D Drawing PDF Link:
<https://cdn.automationdirect.com/static/drawings/T30-150750-25C.pdf>
See store item page for other formats.