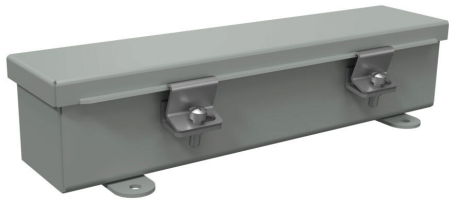


T2212CH Cut Sheet

Wiegmann wiring trough, 2.5 x 2.5 x 12in (HxDxL), NEMA 4, carbon steel, ANSI 61 gray, powder coat finish, single-door.

For complete product information, please see this item on our store at the following link:



<https://www.automationdirect.com/pn/T2212CH>

Technical Specifications

Brand	Wiegmann
Item	Wiring trough
NEMA Rating	4
Enclosure Height	2.72in
Enclosure Depth	2.75in
Enclosure Length	12.31in
Integral Mounting Feet	Yes
Knockouts	No
Material	Carbon steel
Color	ANSI 61 gray
Finish	Powder coat
Cover Type	Single-door
Latch Type	Plated steel clamps

Agency Approvals

UL Listed File #	E32576
UL Recognized File #	N/A
UL Hazardous File #	N/A
CE	None
CSA File #	N/A
RoHS Status	No
EU REACH	View EU REACH document

Dimensional Drawings



2D Drawing PDF Link:
<https://cdn.automationdirect.com/static/drawings/T2212CH.pdf>
See store item page for other formats.