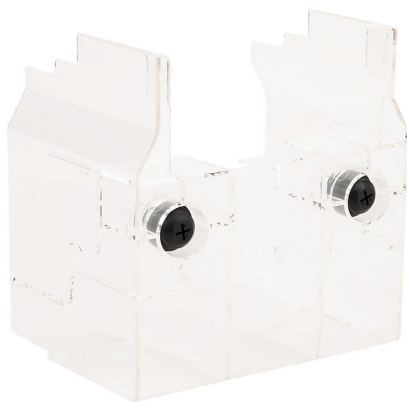


# SZ-N11T Cut Sheet



Fuji Electric terminal shroud, for use with contactor sizes 3NC5F to 3NC5H.

For complete product information, please see this item on our store at the following link:



<https://www.automationdirect.com/pn/SZ-N11T>

## Technical Specifications

Brand	Fuji Electric
Item	Terminal shroud
For Use With	Contactor sizes 3NC5F to 3NC5H

## Agency Approvals

UL Listed File #	None
UL Recognized File #	None
UL Hazardous File #	None
CE	<a href="#">View CE declarations</a>
RoHS Status	Yes (See CE Doc)
EU REACH	<a href="#">View EU REACH document</a>