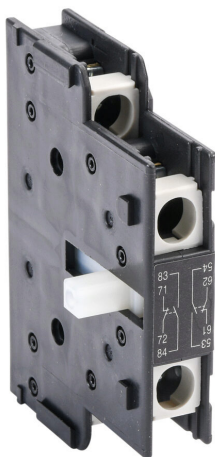


SZ-AS2T Cut Sheet



Fuji Electric auxiliary contact, left or right side mount, (1) N.O./ (1) N.C. contact(s), 6A @ 120 VAC/0.55A @ 120 VDC. For use with SC-E5x, SC-E6x, SC-E7x, 3NC4Qx, 3NC4Hx, 3NC5Fx and 3NC5Hx contactors.

For complete product information, please see this item on our store at the following link:



<https://www.automationdirect.com/pn/SZ-AS2T>

Technical Specifications

Brand	Fuji Electric
Item	Auxiliary contact
Field Installable	No
Mounting	Left or right side
Contact Type	(1) N.O./ (1) N.C.
Amperage Rating	6A @ 120 VAC/0.55A @ 120 VDC
For Use With	SC-E5x, SC-E6x, SC-E7x, 3NC4Qx, 3NC4Hx, 3NC5Fx and 3NC5Hx contactors

Agency Approvals

UL Listed File #	None
UL Recognized File #	E44592
UL Hazardous File #	None
CE	View CE declarations
RoHS Status	Yes (See CE Doc)
EU REACH	View EU REACH document