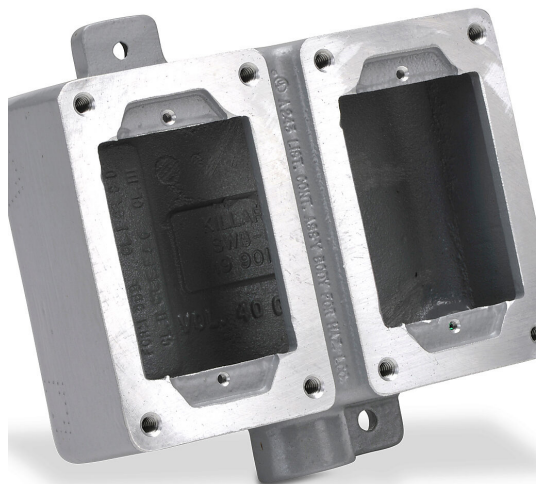


SWB-8 Cut Sheet



Killark device/splice box, dead end, (2) gang, (1) 3/4in female NPT conduit entries, aluminum. Use with XCS series cover assemblies for hazardous locations.

For complete product information, please see this item on our store at the following link:



<https://www.automationdirect.com/pn/SWB-8>

Technical Specifications

Brand	Killark
Item	Device/splice box
Box Type	Dead end
Number Of Gangs	2
Factory Sealed	No
Conduit Entry	(1) 3/4in female NPT
Housing Material	Aluminum
NEMA Rating	3/7/9
Additional Information	Use with XCS series cover assemblies for hazardous locations

Agency Approvals

UL Listed File #	E53360
UL Recognized File #	None
UL Hazardous File #	None
CE	None
CSA File #	LR11712
RoHS Status	No
EU REACH	View EU REACH document

Dimensional Drawings



2D Drawing PDF Link:
<https://cdn.automationdirect.com/static/drawings/SWB-8.pdf>
See store item page for other formats.