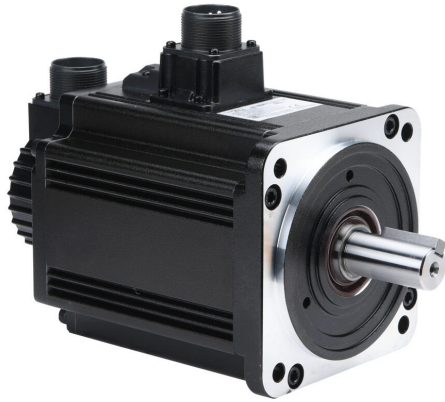


SV2L-415B Cut Sheet



SureServo2 low inertia AC brushless servo motor, 1.5 kW, 3-phase input, 24-bit (16777216 ppr) encoder, integrated brake. For use with SureServo2 SV2A-4150 1.5 kW drive.

For complete product information, please see this item on our store at the following link:



<https://www.automationdirect.com/pn/SV2L-415B>

Technical Specifications

Brand	SureServo2
Item	Servo motor
Performance Level	Low inertia
Voltage Type	AC
Motor Type	Brushless
Power Rating	1.5 kW
Number of Input Phases	3
Rated Speed	2000rpm
Maximum Speed	3000rpm
Amperage Rating	5.1A
Holding Torque Rating	63.4 lb-in
Encoder Resolution	24-bit (16777216 ppr)

Integrated Brake	Yes
Motor Frame	130mm
IP Rating	IP65
Shaft Type	Single
Shaft Diameter	22mm
Steps per Revolution	Up to 24-bit (16777216 ppr)
For Use With	SureServo2 SV2A-4150 1.5 kW drive
Includes	(2) integrated MS connectors for encoder and power cables
Requires	SureServo2 SV2C-Pxxx power cable and SV2C-Exxx encoder cable

Agency Approvals

UL Listed File #	None
UL Recognized File #	E245050
UL Hazardous File #	None
CE	View CE declarations
CSA File #	None
RoHS Status	Yes (See CE Doc)
EU REACH	View EU REACH document

Dimensional Drawings



2D Drawing PDF Link:
<https://cdn.automationdirect.com/static/drawings/2d/SV2L-415B.pdf>
See store item page for other formats.