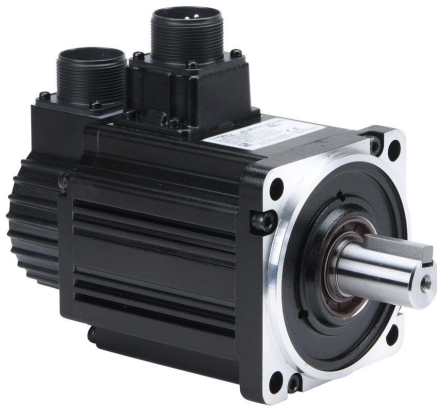


# SV2L-410N Cut Sheet



SureServo2 low inertia AC brushless servo motor, 1 kW, 3-phase input, 24-bit (16777216 ppr) encoder. For use with SureServo2 SV2A-4150 1.5 kW drive.

For complete product information, please see this item on our store at the following link:



<https://www.automationdirect.com/pn/SV2L-410N>

## Technical Specifications

<b>Brand</b>	SureServo2
<b>Item</b>	Servo motor
<b>Performance Level</b>	Low inertia
<b>Voltage Type</b>	AC
<b>Motor Type</b>	Brushless
<b>Power Rating</b>	1 kW
<b>Number of Input Phases</b>	3
<b>Rated Speed</b>	3000rpm
<b>Maximum Speed</b>	5000rpm
<b>Amperage Rating</b>	4.36A
<b>Holding Torque Rating</b>	28.1 lb-in
<b>Encoder Resolution</b>	24-bit (16777216 ppr)

<b>Integrated Brake</b>	No
<b>Motor Frame</b>	100mm
<b>IP Rating</b>	IP65
<b>Shaft Type</b>	Single
<b>Shaft Diameter</b>	22mm
<b>Steps per Revolution</b>	Up to 24-bit (16777216 ppr)
<b>For Use With</b>	SureServo2 SV2A-4150 1.5 kW drive
<b>Includes</b>	(2) integrated MS connectors for encoder and power cables
<b>Requires</b>	SureServo2 SV2C-Pxxx power cable and SV2C-Exxx encoder cable

## Agency Approvals

<b>UL Listed File #</b>	None
<b>UL Recognized File #</b>	E245050
<b>UL Hazardous File #</b>	None
<b>CE</b>	<a href="#">View CE declarations</a>
<b>CSA File #</b>	None
<b>RoHS Status</b>	Yes (See CE Doc)
<b>EU REACH</b>	<a href="#">View EU REACH document</a>

## Dimensional Drawings



2D Drawing PDF Link:  
<https://cdn.automationdirect.com/static/drawings/2d/SV2L-410N.pdf>  
See store item page for other formats.