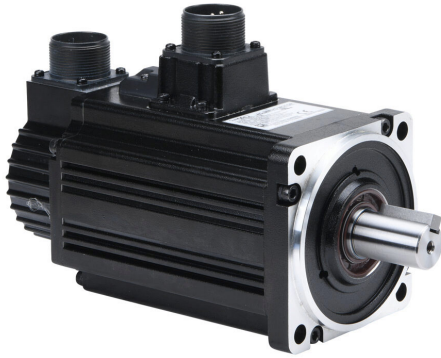


SV2L-410B Cut Sheet



SureServo2 low inertia AC brushless servo motor, 1 kW, 3-phase input, 24-bit (16777216 ppr) encoder, integrated brake. For use with SureServo2 SV2A-4150 1.5 kW drive.

For complete product information, please see this item on our store at the following link:



<https://www.automationdirect.com/pn/SV2L-410B>

Technical Specifications

| | |
|-------------------------------|-----------------------|
| Brand | SureServo2 |
| Item | Servo motor |
| Performance Level | Low inertia |
| Voltage Type | AC |
| Motor Type | Brushless |
| Power Rating | 1 kW |
| Number of Input Phases | 3 |
| Rated Speed | 3000rpm |
| Maximum Speed | 5000rpm |
| Amperage Rating | 4.36A |
| Holding Torque Rating | 28.1 lb-in |
| Encoder Resolution | 24-bit (16777216 ppr) |

| | |
|-----------------------------|--|
| Integrated Brake | Yes |
| Motor Frame | 100mm |
| IP Rating | IP65 |
| Shaft Type | Single |
| Shaft Diameter | 22mm |
| Steps per Revolution | Up to 24-bit (16777216 ppr) |
| For Use With | SureServo2 SV2A-4150 1.5 kW drive |
| Includes | (2) integrated MS connectors for encoder and power cables |
| Requires | SureServo2 SV2C-Pxxx power cable and SV2C-Exxx encoder cable |

Agency Approvals

| | |
|-----------------------------|--|
| UL Listed File # | None |
| UL Recognized File # | E245050 |
| UL Hazardous File # | None |
| CE | View CE declarations |
| CSA File # | None |
| RoHS Status | Yes (See CE Doc) |
| EU REACH | View EU REACH document |

Dimensional Drawings



2D Drawing PDF Link:
<https://cdn.automationdirect.com/static/drawings/2d/SV2L-410B.pdf>
See store item page for other formats.