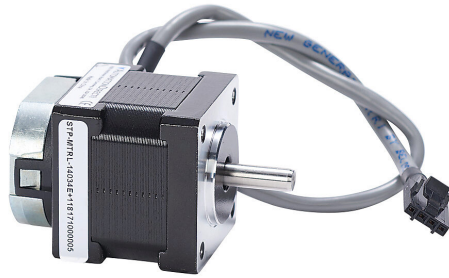


# STP-MTRL-14034E Cut Sheet



SureStep stepper motor, NEMA 14 frame, IP40, dual shaft, external (field-wireable) encoder, 0.8A, 20 oz-in holding torque, 1.8-degree step angle, 200 steps per revolution, bipolar. Requires STP-EXTL-xxx and STP-CBL-EBxxx cables.

For complete product information, please see this item on our store at the following link:



<https://www.automationdirect.com/pn/STP-MTRL-14034E>

## Technical Specifications

<b>Brand</b>	SureStep
<b>Item</b>	Stepper motor
<b>Voltage Type</b>	DC
<b>Motor Type</b>	Brushless
<b>Number of Output Phases</b>	2
<b>Encoder Position</b>	External (field-wireable)
<b>Feedback Type</b>	Incremental (quadrature)
<b>Encoder Type</b>	Rotary
<b>Encoder Resolution</b>	Up to 4096 ppr
<b>Configuration</b>	Software
<b>Encoder Output Type</b>	Line driver (differential)
<b>Integrated Brake</b>	No
<b>Motor Frame</b>	NEMA 14
<b>IP Rating</b>	IP40

<b>Shaft Type</b>	Dual
<b>Front Shaft Diameter</b>	5mm
<b>Rear Shaft Diameter</b>	5mm
<b>Amperage Rating</b>	0.8A
<b>Holding Torque Rating</b>	20 oz-in
<b>Step Angle</b>	1.8-degree
<b>Steps per Revolution</b>	200
<b>Winding Type</b>	Bipolar
<b>Cable Length</b>	1ft
<b>Connector Type</b>	4-position male
<b>Requires</b>	STP-EXTL-xxx and STP-CBL-EBxxx cables
<b>Additional Information</b>	Optional programming cable STP-USBENC-CBL-1 required to change encoder from default 400ppr

## Agency Approvals

<b>UL Listed File #</b>	None
<b>UL Recognized File #</b>	None
<b>UL Hazardous File #</b>	None
<b>CE</b>	<a href="#">View CE declarations</a>
<b>CSA File #</b>	None
<b>RoHS Status</b>	Yes (See CE Doc)
<b>EU REACH</b>	<a href="#">View EU REACH document</a>