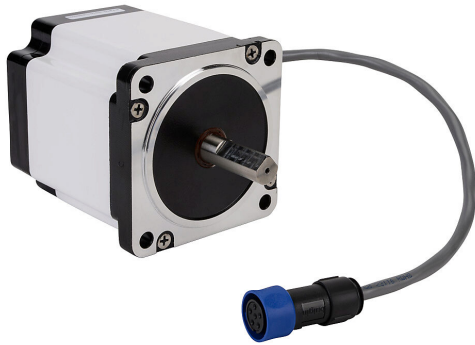


STP-MTRH-34097W Cut Sheet



SureStep stepper motor, NEMA 34 frame, IP65, single shaft, 6.3A, 800 oz-in holding torque, 1.8-degree step angle, 200 steps per revolution, bipolar. Requires STP-EXTHW-xxx cable.

For complete product information, please see this item on our store at the following link:



<https://www.automationdirect.com/pn/STP-MTRH-34097W>

Technical Specifications

Brand	SureStep	Shaft Diameter	1/2in
Item	Stepper motor	Amperage Rating	6.3A
Voltage Type	DC	Holding Torque Rating	800 oz-in
Motor Type	Brushless	Step Angle	1.8-degree
Number of Output Phases	2	Steps per Revolution	200
Integrated Brake	No	Winding Type	Bipolar
Motor Frame	NEMA 34	Cable Length	1ft
IP Rating	IP65	Connector Type	6-position male
Shaft Type	Single	Requires	STP-EXTHW-xxx cable

Agency Approvals

UL Listed File #	None
UL Recognized File #	None
UL Hazardous File #	None
CE	View CE declarations
CSA File #	None
RoHS Status	Yes (See CE Doc)
EU REACH	View EU REACH document

Dimensional Drawings



2D Drawing PDF Link:
<https://cdn.automationdirect.com/static/drawings/STP-MTRH-34097W.pdf>
See store item page for other formats.