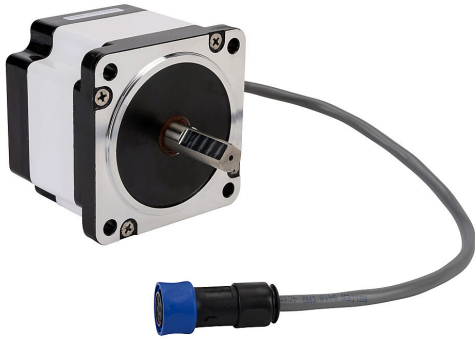


STP-MTRH-34066W Cut Sheet



SureStep stepper motor, NEMA 34 frame, IP65, single shaft, 6.3A, 434 oz-in holding torque, 1.8-degree step angle, 200 steps per revolution, bipolar. Requires STP-EXTHW-xxx cable.

For complete product information, please see this item on our store at the following link:



<https://www.automationdirect.com/pn/STP-MTRH-34066W>

Technical Specifications

Brand	SureStep
Item	Stepper motor
Voltage Type	DC
Motor Type	Brushless
Number of Output Phases	2
Integrated Brake	No
Motor Frame	NEMA 34
IP Rating	IP65
Shaft Type	Single
Shaft Diameter	1/2in
Amperage Rating	6.3A
Holding Torque Rating	434 oz-in
Step Angle	1.8-degree
Steps per Revolution	200
Winding Type	Bipolar
Cable Length	1ft
Connector Type	6-position male
Requires	STP-EXTHW-xxx cable

Agency Approvals

UL Listed File #	None
UL Recognized File #	None
UL Hazardous File #	None
CE	View CE declarations
CSA File #	None
RoHS Status	Yes (See CE Doc)
EU REACH	View EU REACH document