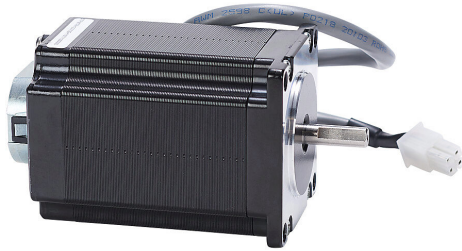


STP-MTRH-23079E Cut Sheet



SureStep stepper motor, NEMA 23 frame, IP40, dual shaft, external (field-wireable) encoder, 5.6A, 286 oz-in holding torque, 1.8-degree step angle, 200 steps per revolution, bipolar. Requires STP-EXTH-xxx and STP-CBL-EBxxx cables.

For complete product information, please see this item on our store at the following link:



<https://www.automationdirect.com/pn/STP-MTRH-23079E>

Technical Specifications

Brand	SureStep
Item	Stepper motor
Voltage Type	DC
Motor Type	Brushless
Number of Output Phases	2
Encoder Position	External (field-wireable)
Feedback Type	Incremental (quadrature)
Encoder Type	Rotary
Encoder Resolution	Up to 4096 ppr
Configuration	Software
Encoder Output Type	Line driver (differential)
Integrated Brake	No
Motor Frame	NEMA 23
IP Rating	IP40

Shaft Type	Dual
Front Shaft Diameter	1/4in
Rear Shaft Diameter	1/4in
Amperage Rating	5.6A
Holding Torque Rating	286 oz-in
Step Angle	1.8-degree
Steps per Revolution	200
Winding Type	Bipolar
Cable Length	1ft
Connector Type	4-position male
Requires	STP-EXTH-xxx and STP-CBL-EBxxx cables
Additional Information	Optional programming cable STP-USBENC-CBL-1 required to change encoder from default 400ppr

Agency Approvals

UL Listed File #	None
UL Recognized File #	None
UL Hazardous File #	None
CE	View CE declarations
CSA File #	None
RoHS Status	Yes (See CE Doc)
EU REACH	View EU REACH document