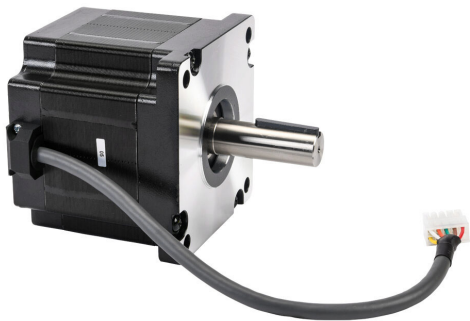


STP-MTRACH-42100 Cut Sheet



SureStep stepper motor, NEMA 42 frame, IP40, single shaft, 6A, 1742 oz-in holding torque, 1.8-degree step angle, 200 steps per revolution, bipolar. Requires SureStep STP-EXT42H-xxx cable.

For complete product information, please see this item on our store at the following link:



<https://www.automationdirect.com/pn/STP-MTRACH-42100>

Technical Specifications

Brand	SureStep	Shaft Diameter	3/4in
Item	Stepper motor	Amperage Rating	6A
Voltage Type	DC	Holding Torque Rating	1742 oz-in
Motor Type	Brushless	Step Angle	1.8-degree
Number of Output Phases	2	Steps per Revolution	200
Integrated Brake	No	Winding Type	Bipolar
Motor Frame	NEMA 42	Connector Type	10-pin male
IP Rating	IP40	Requires	SureStep STP-EXT42H-xxx cable
Shaft Type	Single	Additional Information	Motors can be wired in series or parallel configuration

Agency Approvals

UL Listed File #	None
UL Recognized File #	E245050
UL Hazardous File #	None
CE	View CE declarations
CSA File #	None
RoHS Status	Yes (See CE Doc)
EU REACH	View EU REACH document

Dimensional Drawings



2D Drawing PDF Link:
<https://cdn.automationdirect.com/static/drawings/STP-MTRACH-42100.pdf>
See store item page for other formats.