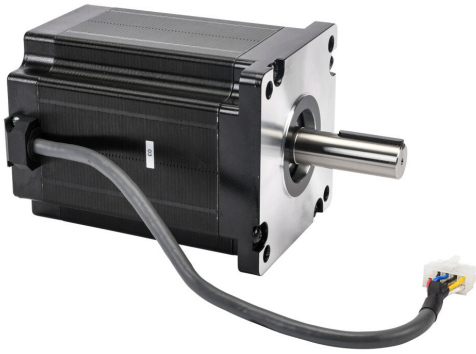


STP-MTRAC-42151 Cut Sheet



SureStep stepper motor, NEMA 42 frame, IP40, single shaft, 6A, 3116 oz-in holding torque, 1.8-degree step angle, 200 steps per revolution, bipolar. Requires SureStep STP-EXT42-xxx cable.

For complete product information, please see this item on our store at the following link:



<https://www.automationdirect.com/pn/STP-MTRAC-42151>

Technical Specifications

Brand	SureStep
Item	Stepper motor
Voltage Type	DC
Motor Type	Brushless
Number of Output Phases	2
Integrated Brake	No
Motor Frame	NEMA 42
IP Rating	IP40
Shaft Type	Single
Shaft Diameter	3/4in
Amperage Rating	6A
Holding Torque Rating	3116 oz-in
Step Angle	1.8-degree
Steps per Revolution	200
Winding Type	Bipolar
Connector Type	10-pin male
Requires	SureStep STP-EXT42-xxx cable
Additional Information	Motors can be wired in series or parallel configuration

Agency Approvals

UL Listed File #	None
UL Recognized File #	E245050
UL Hazardous File #	None
CE	View CE declarations
CSA File #	None
RoHS Status	Yes (See CE Doc)
EU REACH	View EU REACH document