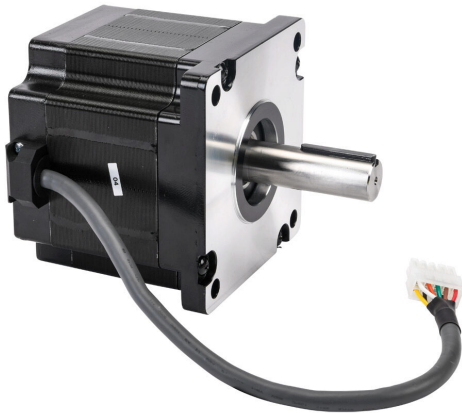


# STP-MTRAC-42100D Cut Sheet



SureStep stepper motor, NEMA 42 frame, IP40, dual shaft, encoder ready, 4.2A, 1728 oz-in holding torque, 1.8-degree step angle, 200 steps per revolution, bipolar. Requires SureStep STP-EXT42-xxx cable.

For complete product information, please see this item on our store at the following link:



<https://www.automationdirect.com/pn/STP-MTRAC-42100D>

## Technical Specifications

<b>Brand</b>	SureStep
<b>Item</b>	Stepper motor
<b>Voltage Type</b>	DC
<b>Motor Type</b>	Brushless
<b>Number of Output Phases</b>	2
<b>Encoder Position</b>	Encoder ready
<b>Encoder Resolution</b>	Encoder ready
<b>Integrated Brake</b>	No
<b>Motor Frame</b>	NEMA 42
<b>IP Rating</b>	IP40
<b>Shaft Type</b>	Dual
<b>Front Shaft Diameter</b>	3/4in
<b>Rear Shaft Diameter</b>	1/2in
<b>Amperage Rating</b>	4.2A
<b>Holding Torque Rating</b>	1728 oz-in
<b>Step Angle</b>	1.8-degree
<b>Steps per Revolution</b>	200
<b>Winding Type</b>	Bipolar
<b>Connector Type</b>	10-pin male
<b>Requires</b>	SureStep STP-EXT42-xxx cable
<b>Additional Information</b>	Motors can be wired in series or parallel configuration. Encoder installation requires STP-MTRA-42ENC mounting plate

## Agency Approvals

<b>UL Listed File #</b>	None
<b>UL Recognized File #</b>	E245050
<b>UL Hazardous File #</b>	None
<b>CE</b>	<a href="#">View CE declarations</a>
<b>CSA File #</b>	None
<b>RoHS Status</b>	Yes (See CE Doc)
<b>EU REACH</b>	<a href="#">View EU REACH document</a>