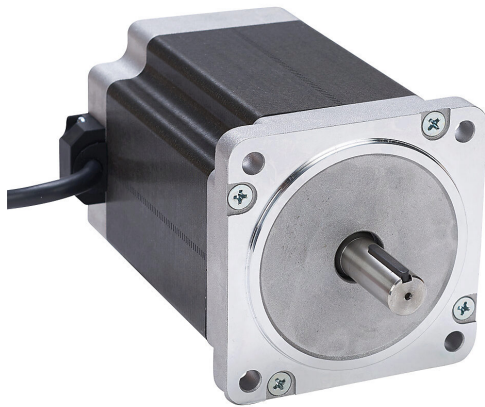


STP-MTRAC-34115 Cut Sheet



SureStep stepper motor, NEMA 34 frame, IP40, single shaft, 2.05A, 1110 oz-in holding torque, 1.8-degree step angle, 200 steps per revolution, bipolar.

For complete product information, please see this item on our store at the following link:



<https://www.automationdirect.com/pn/STP-MTRAC-34115>

Technical Specifications

Brand	SureStep	Shaft Diameter	1/2in
Item	Stepper motor	Amperage Rating	2.05A
Voltage Type	DC	Holding Torque Rating	1110 oz-in
Motor Type	Brushless	Step Angle	1.8-degree
Number of Output Phases	2	Steps per Revolution	200
Integrated Brake	No	Winding Type	Bipolar
Motor Frame	NEMA 34	Cable Length	10ft
IP Rating	IP40	Connector Type	Pigtail
Shaft Type	Single	Additional Information	Optimized for AC-input stepper drives

Agency Approvals

UL Listed File #	None
UL Recognized File #	E245050
UL Hazardous File #	None
CE	None
CSA File #	None
RoHS Status	No
EU REACH	View EU REACH document

Dimensional Drawings



2D Drawing PDF Link:
<https://cdn.automationdirect.com/static/drawings/STP-MTRAC-34115.pdf>
See store item page for other formats.