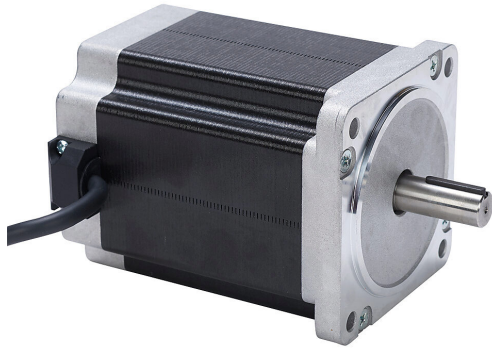


STP-MTRAC-34115D Cut Sheet



SureStep stepper motor, NEMA 34 frame, IP40, dual shaft, encoder ready, 2.05A, 1110 oz-in holding torque, 1.8-degree step angle, 200 steps per revolution, bipolar.

For complete product information, please see this item on our store at the following link:



<https://www.automationdirect.com/pn/STP-MTRAC-34115D>

Technical Specifications

Brand	SureStep
Item	Stepper motor
Voltage Type	DC
Motor Type	Brushless
Number of Output Phases	2
Encoder Position	Encoder ready
Encoder Resolution	Encoder ready
Integrated Brake	No
Motor Frame	NEMA 34
IP Rating	IP40
Shaft Type	Dual
Front Shaft Diameter	1/2in
Rear Shaft Diameter	3/8in
Amperage Rating	2.05A
Holding Torque Rating	1110 oz-in
Step Angle	1.8-degree
Steps per Revolution	200
Winding Type	Bipolar
Cable Length	10ft
Connector Type	Pigtail
Additional Information	Optimized for AC-input stepper drives

Agency Approvals

UL Listed File #	None
UL Recognized File #	E245050
UL Hazardous File #	None
CE	None
CSA File #	None
RoHS Status	No
EU REACH	View EU REACH document