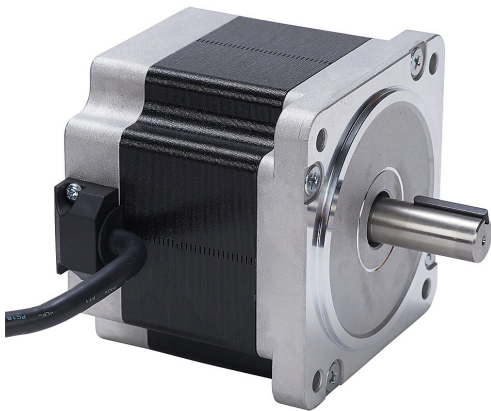


# STP-MTRAC-34075 Cut Sheet



SureStep stepper motor, NEMA 34 frame, IP40, single shaft, 2.15A, 821 oz-in holding torque, 1.8-degree step angle, 200 steps per revolution, bipolar.

For complete product information, please see this item on our store at the following link:



<https://www.automationdirect.com/pn/STP-MTRAC-34075>

## Technical Specifications

Brand	SureStep
Item	Stepper motor
Voltage Type	DC
Motor Type	Brushless
Number of Output Phases	2
Integrated Brake	No
Motor Frame	NEMA 34
IP Rating	IP40
Shaft Type	Single

Shaft Diameter	1/2in
Amperage Rating	2.15A
Holding Torque Rating	821 oz-in
Step Angle	1.8-degree
Steps per Revolution	200
Winding Type	Bipolar
Cable Length	10ft
Connector Type	Pigtail
Additional Information	Optimized for AC-input stepper drives

## Agency Approvals

UL Listed File #	None
UL Recognized File #	E245050
UL Hazardous File #	None
CE	None
CSA File #	None
RoHS Status	No
EU REACH	<a href="#">View EU REACH document</a>

## Dimensional Drawings



2D Drawing PDF Link:  
<https://cdn.automationdirect.com/static/drawings/STP-MTRAC-34075.pdf>  
See store item page for other formats.