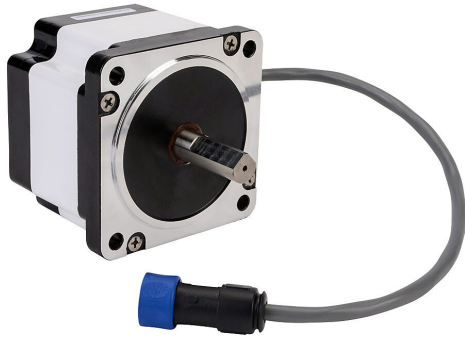


# STP-MTR-34066W Cut Sheet



SureStep stepper motor, NEMA 34 frame, IP65, single shaft, 2.8A, 434 oz-in holding torque, 1.8-degree step angle, 200 steps per revolution, bipolar. Requires STP-EXTW-xxx cable.

For complete product information, please see this item on our store at the following link:



<https://www.automationdirect.com/pn/STP-MTR-34066W>

## Technical Specifications

<b>Brand</b>	SureStep	<b>Shaft Diameter</b>	1/2in
<b>Item</b>	Stepper motor	<b>Amperage Rating</b>	2.8A
<b>Voltage Type</b>	DC	<b>Holding Torque Rating</b>	434 oz-in
<b>Motor Type</b>	Brushless	<b>Step Angle</b>	1.8-degree
<b>Number of Output Phases</b>	2	<b>Steps per Revolution</b>	200
<b>Integrated Brake</b>	No	<b>Winding Type</b>	Bipolar
<b>Motor Frame</b>	NEMA 34	<b>Cable Length</b>	1ft
<b>IP Rating</b>	IP65	<b>Connector Type</b>	6-position male
<b>Shaft Type</b>	Single	<b>Requires</b>	STP-EXTW-xxx cable

## Agency Approvals

<b>UL Listed File #</b>	None
<b>UL Recognized File #</b>	None
<b>UL Hazardous File #</b>	None
<b>CE</b>	<a href="#">View CE declarations</a>
<b>CSA File #</b>	None
<b>RoHS Status</b>	Yes (See CE Doc)
<b>EU REACH</b>	<a href="#">View EU REACH document</a>

## Dimensional Drawings



2D Drawing PDF Link:  
<https://cdn.automationdirect.com/static/drawings/STP-MTR-34066W.pdf>  
See store item page for other formats.