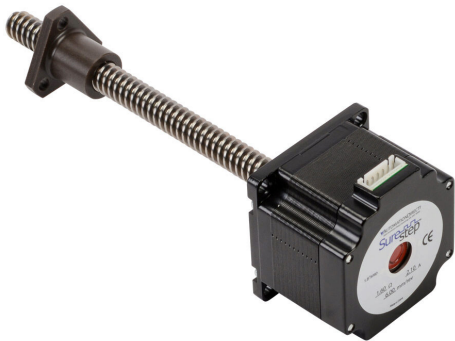


STP-LE23-1H06ANN Cut Sheet



SureStep stepper motor linear actuator, external nut, NEMA 23 frame, IP40, single stack, 2.1A, 6in lead screw length, 6mm/rev, 12mm lead screw diameter, screw code H, no end machining.

For complete product information, please see this item on our store at the following link:



<https://www.automationdirect.com/pn/STP-LE23-1H06ANN>

Technical Specifications

Brand	SureStep
Item	Stepper motor linear actuator
Actuator Type	External nut
Voltage Type	DC
Motor Type	Brushless
Number of Input Phases	2
Integrated Brake	No
Motor Frame	NEMA 23
IP Rating	IP40
Shaft Type	Single
Amperage Rating	2.1A
Holding Torque Rating	125 oz-in
Step Angle	1.8-degree

Steps per Revolution	200
Winding Type	Bipolar
Screw Code	H
Driver Type	Lead screw
Motor Stack Length	Single
Pitch	3mm
Screw Lead	6mm/rev
Lead Screw Length	6in
Lead Screw Diameter	12mm
Number of Thread Starts	2
Connector Type	6-position male
End Machining	None
Includes	(1) lead screw flange nut and (1) 1ft motor cable

Agency Approvals

UL Listed File #	None
UL Recognized File #	None
UL Hazardous File #	None
CE	View CE declarations
CSA File #	None
RoHS Status	Yes (See CE Doc)
EU REACH	View EU REACH document

Dimensional Drawings



2D Drawing PDF Link:
<https://cdn.automationdirect.com/static/drawings/STP-LE23-1H06ANN.pdf>
See store item page for other formats.