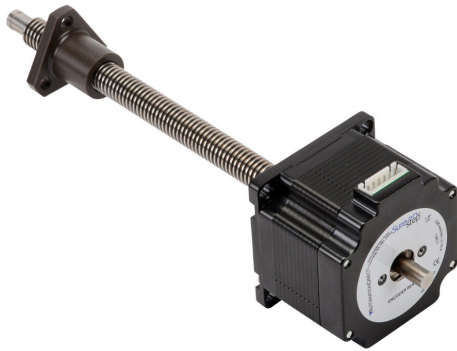


STP-LE23-1G06ADJ Cut Sheet



SureStep stepper motor linear actuator, external nut, encoder ready, NEMA 23 frame, IP40, single stack, 2.1A, 6in lead screw length, 2mm/rev, 12mm lead screw diameter, screw code G, journal and groove end machining.

For complete product information, please see this item on our store at the following link:



<https://www.automationdirect.com/pn/STP-LE23-1G06ADJ>

Technical Specifications

Brand	SureStep
Item	Stepper motor linear actuator
Actuator Type	External nut
Voltage Type	DC
Motor Type	Brushless
Number of Input Phases	2
Encoder Position	Encoder ready
Encoder Resolution	Encoder ready
Integrated Brake	No
Motor Frame	NEMA 23
IP Rating	IP40
Shaft Type	Dual
Amperage Rating	2.1A
Holding Torque Rating	125 oz-in

Step Angle	1.8-degree
Steps per Revolution	200
Winding Type	Bipolar
Screw Code	G
Driver Type	Lead screw
Motor Stack Length	Single
Pitch	2mm
Screw Lead	2mm/rev
Lead Screw Length	6in
Lead Screw Diameter	12mm
Number of Thread Starts	1
Connector Type	6-position male
End Machining	Journal and groove
Includes	(1) lead screw flange nut and (1) 1ft motor cable

Agency Approvals

UL Listed File #	None
UL Recognized File #	None
UL Hazardous File #	None
CE	View CE declarations
CSA File #	None
RoHS Status	Yes (See CE Doc)
EU REACH	View EU REACH document

Dimensional Drawings



2D Drawing PDF Link:
<https://cdn.automationdirect.com/static/drawings/STP-LE23-1G06ADJ.pdf>
See store item page for other formats.