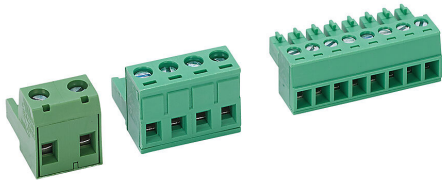


STP-CON-6 Cut Sheet



SureStep connector kit, replacement. For use with SureStep STP-DRV-4845 and STP-DRVAC-24025 microstepping drives. Includes (1) input power connector, (1) motor power connector and (1) control signal connector.

For complete product information, please see this item on our store at the following link:



<https://www.automationdirect.com/pn/STP-CON-6>

Technical Specifications

Brand	SureStep
Item	Connector kit
Replacement	Yes
For Use With	SureStep STP-DRV-4845 and STP-DRVAC-24025 microstepping drives
Kit Includes	(1) input power connector, (1) motor power connector and (1) control signal connector

Agency Approvals

UL Listed File #	None
UL Recognized File #	None
UL Hazardous File #	None
CE	None
CSA File #	None
RoHS Status	No
EU REACH	View EU REACH document