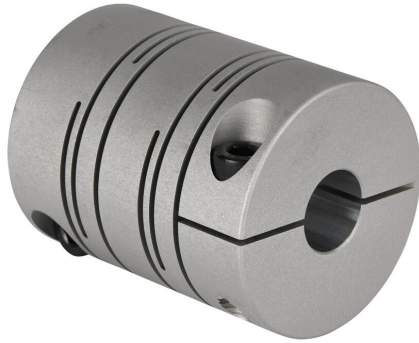


SRBA-60C-18-19 Cut Sheet



Sung-II Machinery drive coupling, servo-beam, 7075-T6 aluminum alloy, clamp, size 60, 18 x 19mm bore.

For complete product information, please see this item on our store at the following link:



<https://www.automationdirect.com/pn/SRBA-60C-18-19>

Technical Specifications

Brand	Sung-II Machinery
Item	Drive coupling
Coupling Type	Servo-beam
Material	7075-T6 aluminum alloy
Rated Torque	30 N-m
Maximum Torque	60 N-m
Maximum Angular Misalignment	2.5 degrees
Maximum Parallel Misalignment	0.25mm

Maximum RPM	7000
Attachment Style	Clamp
Coupling Size	60
Bore Diameter	18mm
Bore Diameter 2	19mm
Outside Diameter	60mm
Clamp Screw Fastening Torque	30 N-m
Clamp Screw Size	M8

Agency Approvals

UL Listed File #	None
UL Recognized File #	None
UL Hazardous File #	None
CE	None
CSA File #	None
RoHS Status	Meets RoHS Chemical Restrictions - No CE (See RoHS Statement Below)
EU REACH	View EU REACH document
Other	RoHS Statement

Dimensional Drawings



2D Drawing PDF Link:
<https://cdn.automationdirect.com/static/drawings/SRBA-60C-18-19.pdf>
See store item page for other formats.