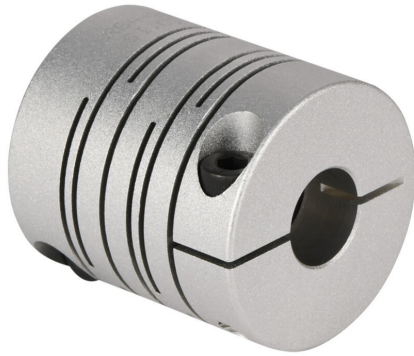


SRBA-39C-14-14 Cut Sheet



Sung-II Machinery drive coupling, servo-beam, 7075-T6 aluminum alloy, clamp, size 39, 14 x 14mm bore.

For complete product information, please see this item on our store at the following link:



<https://www.automationdirect.com/pn/SRBA-39C-14-14>

Technical Specifications

Brand	Sung-II Machinery
Item	Drive coupling
Coupling Type	Servo-beam
Material	7075-T6 aluminum alloy
Rated Torque	7 N·m
Maximum Torque	14 N·m
Maximum Angular Misalignment	2.5 degrees
Maximum Parallel Misalignment	0.25mm
Maximum RPM	10000

Attachment Style	Clamp
Coupling Size	39
Overall Length	43mm
Bore Diameter	14mm
Bore Diameter 2	14mm
Outside Diameter	39mm
Clamp Screw Fastening Torque	8 N·m
Clamp Screw Size	M5-0.8 x 16mm

Agency Approvals

UL Listed File #	None
UL Recognized File #	None
UL Hazardous File #	None
CE	None
CSA File #	None
RoHS Status	Meets RoHS Chemical Restrictions - No CE (See RoHS Statement Below)
EU REACH	View EU REACH document
Other	RoHS Statement

Dimensional Drawings



2D Drawing PDF Link:
<https://cdn.automationdirect.com/static/drawings/2d/SRBA-39C-14-14.pdf>
See store item page for other formats.