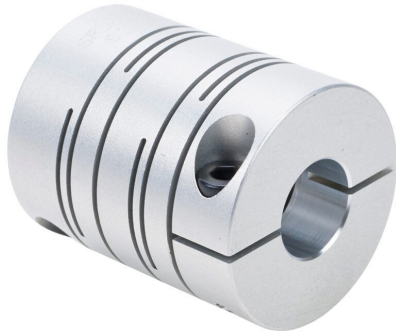


SRBA-32C-9.525-12.7 Cut Sheet



Sung-II Machinery drive coupling, servo-beam, 7075-T6 aluminum alloy, clamp, size 32, 3/8 x 1/2in bore.

For complete product information, please see this item on our store at the following link:



<https://www.automationdirect.com/pn/SRBA-32C-9.525-12.7>

Technical Specifications

Brand	Sung-II Machinery
Item	Drive coupling
Coupling Type	Servo-beam
Material	7075-T6 aluminum alloy
Rated Torque	3.8 N·m
Maximum Torque	7.6 N·m
Slip Torque	7 N·m
Maximum Angular Misalignment	2.5 degrees
Maximum Parallel Misalignment	0.2mm

Maximum RPM	14000
Attachment Style	Clamp
Coupling Size	32
Overall Length	39mm
Bore Diameter	3/8in
Bore Diameter 2	1/2in
Outside Diameter	31.8mm
Clamp Screw Fastening Torque	3.5 N·m
Clamp Screw Size	M4-0.7 x 12mm

Agency Approvals

UL Listed File #	None
UL Recognized File #	None
UL Hazardous File #	None
CE	None
CSA File #	None
RoHS Status	Meets RoHS Chemical Restrictions - No CE (See RoHS Statement Below)
EU REACH	View EU REACH document
Other	RoHS Statement

Dimensional Drawings



2D Drawing PDF Link:
<https://cdn.automationdirect.com/static/drawings/2d/SRBA-32C-9.525-12.7.pdf>
See store item page for other formats.