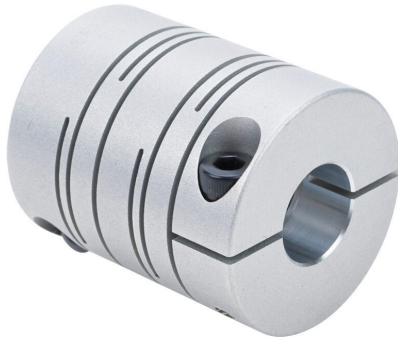


SRBA-32C-6.35-12.7 Cut Sheet



Sung-II Machinery drive coupling, servo-beam, 7075-T6 aluminum alloy, clamp, size 32, 1/4 x 1/2in bore.

For complete product information, please see this item on our store at the following link:



<https://www.automationdirect.com/pn/SRBA-32C-6.35-12.7>

Technical Specifications

Brand	Sung-II Machinery
Item	Drive coupling
Coupling Type	Servo-beam
Material	7075-T6 aluminum alloy
Rated Torque	3.8 N·m
Maximum Torque	7.6 N·m
Slip Torque	2.8 N·m
Maximum Angular Misalignment	2.5 degrees
Maximum Parallel Misalignment	0.2mm

Maximum RPM	14000
Attachment Style	Clamp
Coupling Size	32
Overall Length	39mm
Bore Diameter	1/4in
Bore Diameter 2	1/2in
Outside Diameter	31.8mm
Clamp Screw Fastening Torque	3.5 N·m
Clamp Screw Size	M4-0.7 x 12mm

Agency Approvals

UL Listed File #	None
UL Recognized File #	None
UL Hazardous File #	None
CE	None
CSA File #	None
RoHS Status	Meets RoHS Chemical Restrictions - No CE (See RoHS Statement Below)
EU REACH	View EU REACH document
Other	RoHS Statement

Dimensional Drawings



2D Drawing PDF Link:
<https://cdn.automationdirect.com/static/drawings/2d/SRBA-32C-6.35-12.7.pdf>
See store item page for other formats.