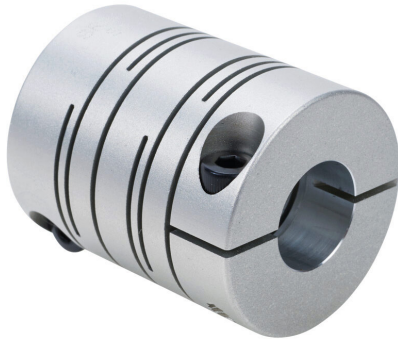


# SRBA-32C-5-14 Cut Sheet



Sung-II Machinery drive coupling, servo-beam, 7075-T6 aluminum alloy, clamp, size 32, 5 x 14mm bore.

For complete product information, please see this item on our store at the following link:



<https://www.automationdirect.com/pn/SRBA-32C-5-14>

## Technical Specifications

<b>Brand</b>	Sung-II Machinery
<b>Item</b>	Drive coupling
<b>Coupling Type</b>	Servo-beam
<b>Material</b>	7075-T6 aluminum alloy
<b>Rated Torque</b>	3.8 N·m
<b>Maximum Torque</b>	7.6 N·m
<b>Slip Torque</b>	2.2 N·m
<b>Maximum Angular Misalignment</b>	2.5 degrees
<b>Maximum Parallel Misalignment</b>	0.2mm

<b>Maximum RPM</b>	14000
<b>Attachment Style</b>	Clamp
<b>Coupling Size</b>	32
<b>Overall Length</b>	39mm
<b>Bore Diameter</b>	5mm
<b>Bore Diameter 2</b>	14mm
<b>Outside Diameter</b>	31.8mm
<b>Clamp Screw Fastening Torque</b>	3.5 N·m
<b>Clamp Screw Size</b>	M4-0.7 x 12mm

## Agency Approvals

<b>UL Listed File #</b>	None
<b>UL Recognized File #</b>	None
<b>UL Hazardous File #</b>	None
<b>CE</b>	None
<b>CSA File #</b>	None
<b>RoHS Status</b>	Meets RoHS Chemical Restrictions - No CE (See RoHS Statement Below)
<b>EU REACH</b>	<a href="#">View EU REACH document</a>
<b>Other</b>	<a href="#">RoHS Statement</a>

## Dimensional Drawings



2D Drawing PDF Link:  
<https://cdn.automationdirect.com/static/drawings/2d/SRBA-32C-5-14.pdf>  
See store item page for other formats.