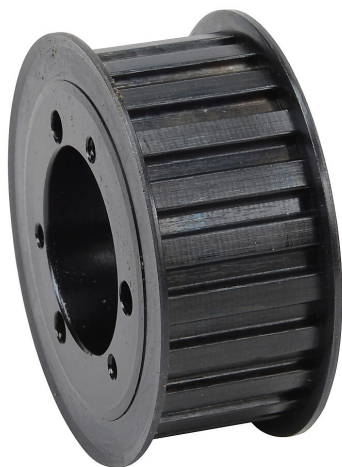


SQD22L100AF-JA Cut Sheet



SureMotion timing pulley, steel, 3/8in L pitch, 22 tooth, 2.626in pitch diameter, no hub with flanges. For use with 1in wide belt. Requires JA series QD style bushing.

For complete product information, please see this item on our store at the following link:



<https://www.automationdirect.com/pn/SQD22L100AF-JA>

Technical Specifications

Brand	SureMotion
Item	Timing pulley
Material	Steel
Pitch	3/8in L
Number of Teeth	22
Pitch Diameter	2.626in
Pulley Type	No hub with flanges
Mounting Type	QD style bushing
For Use With	1in wide belt
Requires	JA series QD style bushing

Agency Approvals

UL Listed File #	None
UL Recognized File #	None
UL Hazardous File #	None
CE	None
CSA File #	None
RoHS Status	No
EU REACH	View EU REACH document

Dimensional Drawings



2D Drawing PDF Link:
<https://cdn.automationdirect.com/static/drawings/SQD22L100AF-JA.pdf>
See store item page for other formats.