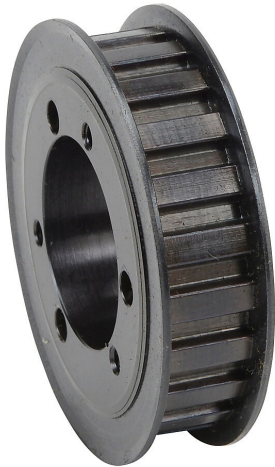


# SQD22L050AF-JA Cut Sheet



SureMotion timing pulley, steel, 3/8in L pitch, 22 tooth, 2.626in pitch diameter, no hub with flanges. For use with 1/2in wide belt. Requires JA series QD style bushing.

For complete product information, please see this item on our store at the following link:



<https://www.automationdirect.com/pn/SQD22L050AF-JA>

## Technical Specifications

<b>Brand</b>	SureMotion
<b>Item</b>	Timing pulley
<b>Material</b>	Steel
<b>Pitch</b>	3/8in L
<b>Number of Teeth</b>	22
<b>Pitch Diameter</b>	2.626in
<b>Pulley Type</b>	No hub with flanges
<b>Mounting Type</b>	QD style bushing
<b>For Use With</b>	1/2in wide belt
<b>Requires</b>	JA series QD style bushing

## Agency Approvals

<b>UL Listed File #</b>	None
<b>UL Recognized File #</b>	None
<b>UL Hazardous File #</b>	None
<b>CE</b>	None
<b>CSA File #</b>	None
<b>RoHS Status</b>	No
<b>EU REACH</b>	<a href="#">View EU REACH document</a>