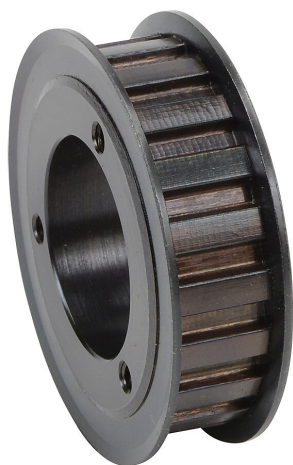


# SQD20L050AF-JA Cut Sheet



SureMotion timing pulley, steel, 3/8in L pitch, 20 tooth, 2.387in pitch diameter, no hub with flanges. For use with 1/2in wide belt. Requires JA series QD style bushing.

For complete product information, please see this item on our store at the following link:



<https://www.automationdirect.com/pn/SQD20L050AF-JA>

## Technical Specifications

Brand	SureMotion
Item	Timing pulley
Material	Steel
Pitch	3/8in L
Number of Teeth	20
Pitch Diameter	2.387in
Pulley Type	No hub with flanges
Mounting Type	QD style bushing
For Use With	1/2in wide belt
Requires	JA series QD style bushing

## Agency Approvals

UL Listed File #	None
UL Recognized File #	None
UL Hazardous File #	None
CE	None
CSA File #	None
RoHS Status	No
EU REACH	<a href="#">View EU REACH document</a>

## Dimensional Drawings



2D Drawing PDF Link:  
<https://cdn.automationdirect.com/static/drawings/SQD20L050AF-JA.pdf>  
See store item page for other formats.