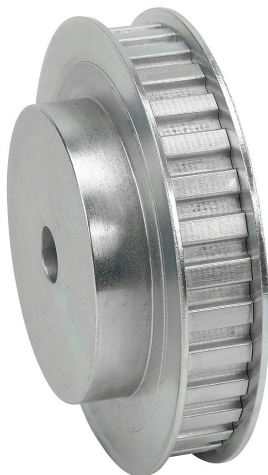


SPB32L050BF-500 Cut Sheet



SureMotion timing pulley, steel, 3/8in L pitch, 32 tooth, 3.82in pitch diameter, 1/2in bore, hub with flanges. For use with 1/2in wide belt.

For complete product information, please see this item on our store at the following link:



<https://www.automationdirect.com/pn/SPB32L050BF-500>

Technical Specifications

Brand	SureMotion
Item	Timing pulley
Material	Steel
Pitch	3/8in L
Number of Teeth	32
Pitch Diameter	3.82in
Bore Diameter	1/2in
Pulley Type	Hub with flanges
Mounting Type	Smooth bore without set screws
For Use With	1/2in wide belt

Agency Approvals

UL Listed File #	None
UL Recognized File #	None
UL Hazardous File #	None
CE	None
CSA File #	None
RoHS Status	No
EU REACH	View EU REACH document

Dimensional Drawings



2D Drawing PDF Link:
<https://cdn.automationdirect.com/static/drawings/SPB32L050BF-500.pdf>
See store item page for other formats.