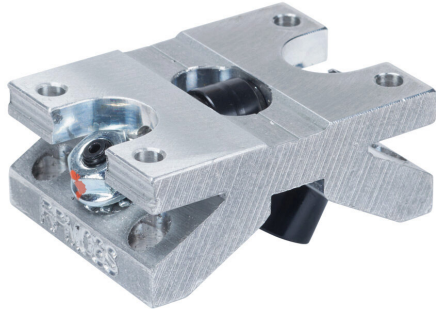


SPB-08-OPN Cut Sheet



PBC SPB series single roller pillow block, cam follower bearing, 1.5in overall length, steel, 1/2in inside diameter, aluminum housing, adjustable running clearance. For use with 1/2in diameter PBC shafts.

For complete product information, please see this item on our store at the following link:



<https://www.automationdirect.com/pn/SPB-08-OPN>

Technical Specifications

Brand	PBC
Item	Single roller pillow block
Series	SPB
Block Type	Open type
Overall Length	1.5in
Bearing Type	Cam follower bearing
Bearing Material	Steel
Housing Fit	Self-aligning
Bearing Inside Diameter	1/2in
Housing Material	Aluminum
Running Clearance	Adjustable
For Use With	1/2in diameter PBC shafts

Agency Approvals

UL Listed File #	Not Applicable
UL Recognized File #	Not Applicable
UL Hazardous File #	Not Applicable
CE	None
CSA File #	Not Applicable
RoHS Status	Meets RoHS Chemical Restrictions - No CE (See RoHS Statement Below)
EU REACH	View EU REACH document
Other	RoHS Statement

Dimensional Drawings



2D Drawing PDF Link:
<https://cdn.automationdirect.com/static/drawings/2d/SPB-08-OPN.pdf>
See store item page for other formats.