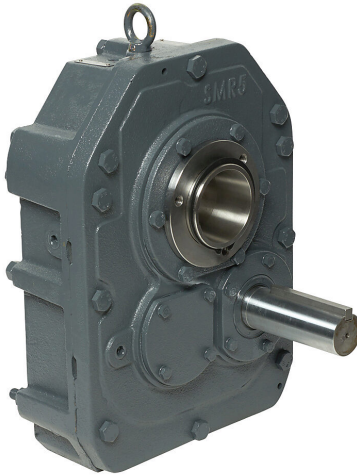


# SMR5-15 Cut Sheet



IronHorse heavy-duty shaft mounted gearbox, 15:1 ratio, 1-15/16in shaft input, tapered bore, maximum motor 40hp, 2-15/16in maximum output shaft diameter, size 5 frame, cast iron housing.

For complete product information, please see this item on our store at the following link:



<https://www.automationdirect.com/pn/SMR5-15>

## Technical Specifications

|                             |                               |
|-----------------------------|-------------------------------|
| <b>Brand</b>                | IronHorse                     |
| <b>Item</b>                 | Gearbox                       |
| <b>Application</b>          | General purpose               |
| <b>Duty Rating</b>          | Heavy-duty                    |
| <b>Gearbox Type</b>         | Shaft mounted                 |
| <b>Gear Ratio</b>           | 15:1                          |
| <b>Speed Rating</b>         | 1750rpm input / 114rpm output |
| <b>Input Configuration</b>  | 1-15/16in shaft               |
| <b>Output Configuration</b> | Tapered bore                  |

|                                      |                                       |
|--------------------------------------|---------------------------------------|
| <b>Maximum Motor Size</b>            | 40hp                                  |
| <b>Maximum Output Shaft Diameter</b> | 2-15/16in                             |
| <b>Frame</b>                         | Size 5                                |
| <b>Housing Material</b>              | Cast iron                             |
| <b>Finish</b>                        | Anti-corrosion primer and paint       |
| <b>Lubrication Type</b>              | Shipped without oil - fill before use |
| <b>Oil Seal Type</b>                 | Double-lip                            |
| <b>Includes</b>                      | Torque arm                            |

## Agency Approvals

|                             |  |
|-----------------------------|--|
| <b>UL Listed File #</b>     | None                                   |
| <b>UL Recognized File #</b> | None                                   |
| <b>UL Hazardous File #</b>  | None                                   |
| <b>CE</b>                   | None                                   |
| <b>CSA File #</b>           | None                                   |
| <b>RoHS Status</b>          | No                                     |
| <b>EU REACH</b>             | <a href="#">View EU REACH document</a> |

## Dimensional Drawings



2D Drawing PDF Link:  
<https://cdn.automationdirect.com/static/drawings/SMR5-15.pdf>  
See store item page for other formats.