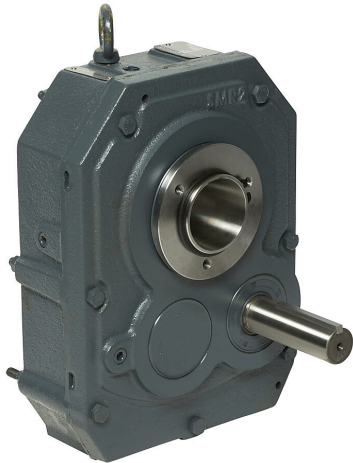


SMR2-25 Cut Sheet



IronHorse heavy-duty shaft mounted gearbox, 25:1 ratio, 1-1/8in shaft input, tapered bore, maximum motor 7.5hp, 1-15/16in maximum output shaft diameter, size 2 frame, cast iron housing.

For complete product information, please see this item on our store at the following link:



<https://www.automationdirect.com/pn/SMR2-25>

Technical Specifications

Brand	IronHorse
Item	Gearbox
Application	General purpose
Duty Rating	Heavy-duty
Gearbox Type	Shaft mounted
Gear Ratio	25:1
Speed Rating	1750rpm input / 75rpm output
Input Configuration	1-1/8in shaft
Output Configuration	Tapered bore

Maximum Motor Size	7.5hp
Maximum Output Shaft Diameter	1-15/16in
Frame	Size 2
Housing Material	Cast iron
Finish	Anti-corrosion primer and paint
Lubrication Type	Shipped without oil - fill before use
Oil Seal Type	Double-lip
Includes	Torque arm

Agency Approvals

UL Listed File #	None
UL Recognized File #	None
UL Hazardous File #	None
CE	None
CSA File #	None
RoHS Status	No
EU REACH	View EU REACH document

Dimensional Drawings



2D Drawing PDF Link:
<https://cdn.automationdirect.com/static/drawings/SMR2-25.pdf>
See store item page for other formats.