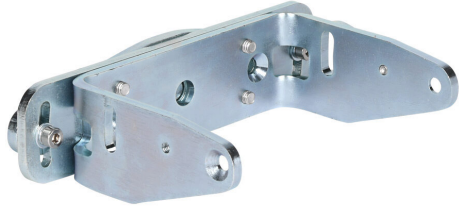


# SLS-BRACKET-A Cut Sheet



Datalogic Sentinel series mounting bracket, zinc plated steel, complete mount. For use with Datalogic safety laser scanner. Mounting hardware included.

For complete product information, please see this item on our store at the following link:



<https://www.automationdirect.com/pn/SLS-BRACKET-A>

---

## Technical Specifications

<b>Brand</b>	Datalogic
<b>Item</b>	Mounting bracket
<b>Series</b>	Sentinel
<b>Material</b>	Zinc plated steel
<b>Mounting</b>	Complete
<b>For Use With</b>	Datalogic safety laser scanner
<b>Includes</b>	Mounting hardware

---

## Agency Approvals

<b>UL Listed File #</b>	None
<b>UL Recognized File #</b>	None
<b>UL Hazardous File #</b>	None
<b>CE</b>	<a href="#">View CE declarations</a>
<b>CSA File #</b>	None
<b>RoHS Status</b>	Yes (See CE Doc)
<b>EU REACH</b>	<a href="#">View EU REACH document</a>

---

## Dimensional Drawings



2D Drawing PDF Link:  
<https://cdn.automationdirect.com/static/drawings/SLS-BRACKET-A.pdf>  
See store item page for other formats.