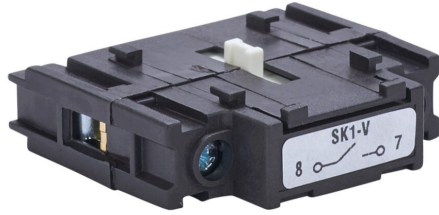


# SK1-V Cut Sheet



Merz fourth pole module, 600 VAC, 40A, load break capable, 5kA SCCR, UL 508 rated. For use with Merz ML1 switch bodies in DIN rail applications.

For complete product information, please see this item on our store at the following link:



<https://www.automationdirect.com/pn/SK1-V>

## Technical Specifications

<b>Brand</b>	Merz
<b>Item</b>	Fourth pole module
<b>Voltage Rating</b>	600 VAC
<b>Amperage Rating</b>	40A
<b>Load Break Capable</b>	Yes
<b>SCCR Rating</b>	5kA SCCR
<b>UL Rating</b>	UL 508 rated
<b>For Use With</b>	Merz ML1 switch bodies in DIN rail applications

## Agency Approvals

<b>UL Listed File #</b>	E195426
<b>UL Recognized File #</b>	None
<b>UL Hazardous File #</b>	None
<b>CE</b>	<a href="#">View CE declarations</a>
<b>CSA File #</b>	None
<b>RoHS Status</b>	Yes (See CE Doc)
<b>EU REACH</b>	<a href="#">View EU REACH document</a>