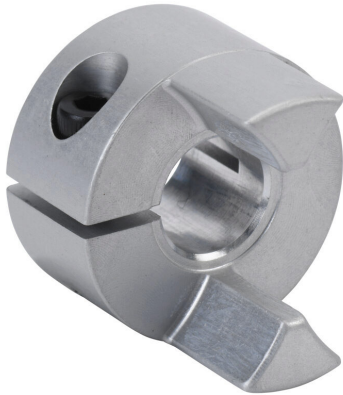


SJC-20C-7.93 Cut Sheet



Sung-II Machinery drive coupling hub, jaw type, aluminum alloy, clamp, size 20, 5/16in bore. Requires SJC-20 series spiders.

For complete product information, please see this item on our store at the following link:



<https://www.automationdirect.com/pn/SJC-20C-7.93>

Technical Specifications

Brand	Sung-II Machinery
Item	Drive coupling hub
Coupling Type	Jaw type
Material	Aluminum alloy
Maximum Angular Misalignment	1.0 degrees
Maximum RPM	15000
Attachment Style	Clamp

Coupling Size	20
Bore Diameter	5/16in
Outside Diameter	20mm
Clamp Screw Fastening Torque	1N-m
Clamp Screw Size	M2.6
Requires	SJC-20 series spiders

Agency Approvals

UL Listed File #	None
UL Recognized File #	None
UL Hazardous File #	None
CE	None
CSA File #	None
RoHS Status	Meets RoHS Chemical Restrictions - No CE (See RoHS Statement Below)
EU REACH	View EU REACH document
Other	RoHS Statement

Dimensional Drawings



2D Drawing PDF Link:
<https://cdn.automationdirect.com/static/drawings/SJC-20C-7.93.pdf>
See store item page for other formats.