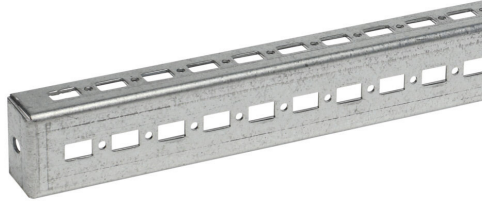


# SCKA07 Cut Sheet



Quadritalia closed-end mounting channel, 902mm length, galvanized steel. For use with 1000mm width/depth enclosures.

For complete product information, please see this item on our store at the following link:



<https://www.automationdirect.com/pn/SCKA07>

---

## Technical Specifications

<b>Brand</b>	Quadritalia
<b>Item</b>	Closed-end mounting channel
<b>Length</b>	902mm
<b>Material</b>	Galvanized steel
<b>For Use With</b>	1000mm width/depth enclosures
<b>Additional Information</b>	Accepts M6 cage nuts and M5 self-tapping screws

---

## Agency Approvals

<b>UL Listed File #</b>	None
<b>UL Recognized File #</b>	None
<b>UL Hazardous File #</b>	None
<b>CE</b>	<a href="#">View CE declarations</a>
<b>CSA File #</b>	None
<b>RoHS Status</b>	Yes (See CE Doc)
<b>EU REACH</b>	<a href="#">View EU REACH document</a>

---

## Dimensional Drawings



2D Drawing PDF Link:  
<https://cdn.automationdirect.com/static/drawings/2d/SCKA07.pdf>  
See store item page for other formats.