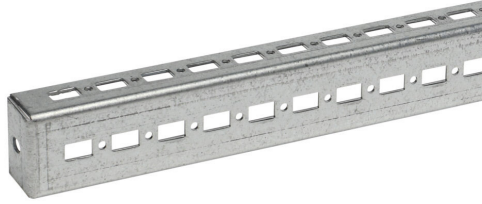


SCK407 Cut Sheet



Quadritalia closed-end mounting channel, 302mm length, galvanized steel. For use with 400mm width/depth enclosures.

For complete product information, please see this item on our store at the following link:



<https://www.automationdirect.com/pn/SCK407>

Technical Specifications

Brand	Quadritalia
Item	Closed-end mounting channel
Length	302mm
Material	Galvanized steel
For Use With	400mm width/depth enclosures
Additional Information	Accepts M6 cage nuts and M5 self-tapping screws

Agency Approvals

UL Listed File #	None
UL Recognized File #	None
UL Hazardous File #	None
CE	View CE declarations
CSA File #	None
RoHS Status	Yes (See CE Doc)
EU REACH	View EU REACH document

Dimensional Drawings



2D Drawing PDF Link:
<https://cdn.automationdirect.com/static/drawings/2d/SCK407.pdf>
See store item page for other formats.