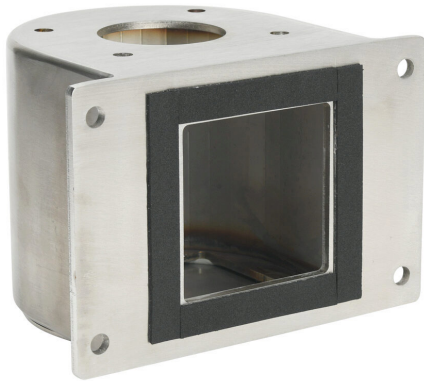


SCE-SASWMA Cut Sheet



Saginaw suspension arm fitting, wall-mount adapter, 304 stainless steel, #4 brush finish. For use with 2.38in round tube suspension arm profile.

For complete product information, please see this item on our store at the following link:



<https://www.automationdirect.com/pn/SCE-SASWMA>

Technical Specifications

Brand	Saginaw
Item	Suspension arm fitting
Fitting Type	Wall-mount adapter
Material	304 stainless steel
Finish	#4 brush
For Use With	2.38in round tube suspension arm profile

Agency Approvals

UL Listed File #	None
UL Recognized File #	None
UL Hazardous File #	None
CSA File #	None
RoHS Status	Meets RoHS Chemical Restrictions - No CE (See RoHS Statement Below)
EU REACH	View EU REACH document
Other	RoHS Statement

Dimensional Drawings



2D Drawing PDF Link:
<https://cdn.automationdirect.com/static/drawings/2d/SCE-SASWMA.pdf>
See store item page for other formats.