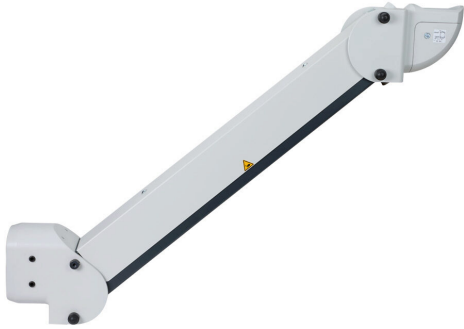


SCE-SAHCB97T132TM Cut Sheet



Saginaw counter balance suspension arm, pedestal mount, 97-132lb. Requires SCE-SAH06TC suspension arm on mounting end.

For complete product information, please see this item on our store at the following link:



<https://www.automationdirect.com/pn/SCE-SAHCB97T132TM>

Technical Specifications

Brand	Saginaw
Item	Counter balance suspension arm
Enclosure Mounting Orientation	Pedestal
Load Capacity	97-132 lb
Requires	SCE-SAH06TC suspension arm on mounting end

Agency Approvals

UL Listed File #	None
UL Recognized File #	None
UL Hazardous File #	None
CSA File #	None
RoHS Status	Meets RoHS Chemical Restrictions - No CE (See RoHS Statement Below)
EU REACH	View EU REACH document
Other	RoHS Statement

Dimensional Drawings



2D Drawing PDF Link:
<https://cdn.automationdirect.com/static/drawings/2d/SCE-SAHCB97T132TM.pdf>
See store item page for other formats.