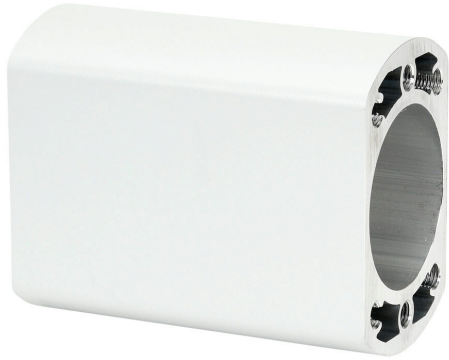


SCE-SAH06TC Cut Sheet



Saginaw suspension arm profile, closed tube, 5.00 x 3.00in, 6in length, 6060T66 aluminum. For use with Saginaw counter balance arms.

For complete product information, please see this item on our store at the following link:



<https://www.automationdirect.com/pn/SCE-SAH06TC>

Technical Specifications

Brand	Saginaw
Item	Suspension arm profile
Shape	Closed tube
Size	5.00 x 3.00in
Length	6in
Material	6060T66 aluminum
For Use With	Saginaw counter balance arms

Agency Approvals

UL Listed File #	None
UL Recognized File #	None
UL Hazardous File #	None
CSA File #	None
RoHS Status	Meets RoHS Chemical Restrictions - No CE (See RoHS Statement Below)
EU REACH	View EU REACH document
Other	RoHS Statement

Dimensional Drawings



2D Drawing PDF Link:
<https://cdn.automationdirect.com/static/drawings/2d/SCE-SAH06TC.pdf>
See store item page for other formats.