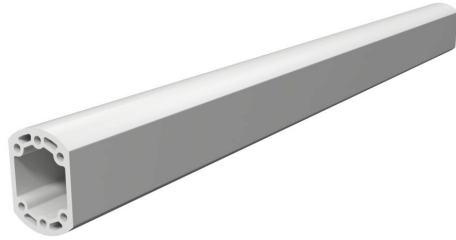


# SCE-SA39TC Cut Sheet



Saginaw suspension arm profile, closed tube, 3.54 x 2.56in, 39.4in length, 6060T66 aluminum.

For complete product information, please see this item on our store at the following link:



<https://www.automationdirect.com/pn/SCE-SA39TC>

## Technical Specifications

<b>Brand</b>	Saginaw
<b>Item</b>	Suspension arm profile
<b>Shape</b>	Closed tube
<b>Size</b>	3.54 x 2.56in
<b>Length</b>	39.4in
<b>Material</b>	6060T66 aluminum

## Agency Approvals

<b>UL Listed File #</b>	None
<b>UL Recognized File #</b>	None
<b>UL Hazardous File #</b>	None
<b>CSA File #</b>	None
<b>RoHS Status</b>	Meets RoHS Chemical Restrictions - No CE (See RoHS Statement Below)
<b>EU REACH</b>	<a href="#">View EU REACH document</a>
<b>Other</b>	<a href="#">RoHS Statement</a>

## Dimensional Drawings



2D Drawing PDF Link:  
<https://cdn.automationdirect.com/static/drawings/2d/SCE-SA39TC.pdf>  
See store item page for other formats.