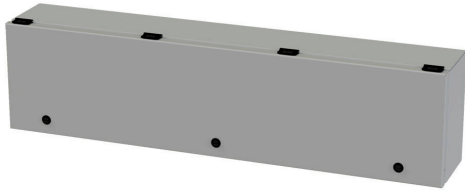


SCE-L9366ELJ Cut Sheet



Saginaw wiring trough, 6 x 9 x 36in (HxDxL), NEMA 3R/4/12/13, wall mount, carbon steel, ANSI 61 gray, powder coat finish, single-door.

For complete product information, please see this item on our store at the following link:



<https://www.automationdirect.com/pn/SCE-L9366ELJ>

Technical Specifications

| | |
|-------------------------------------|----------------------|
| Brand | Saginaw |
| Item | Wiring trough |
| Series | Enviroline Junction |
| NEMA Rating | 3R/4/12/13 |
| IP Rating | IP66 |
| Nominal Enclosure Dimensions | 9 x 36 x 6in (HxWxD) |
| Enclosure Height | 9.00in |
| Enclosure Depth | 6.19in |
| Enclosure Length | 36.00in |

| | |
|-------------------------------|---------------------------|
| Mounting | Wall |
| Integral Mounting Feet | No |
| Knockouts | No |
| Material | Carbon steel |
| Color | ANSI 61 gray |
| Finish | Powder coat |
| Cover Type | Single-door |
| Latch Type | 1/4-turn semi-flush latch |
| Padlockable | No |

Agency Approvals

| | |
|-----------------------------|---|
| UL Listed File # | E69392 |
| UL Recognized File # | None |
| UL Hazardous File # | None |
| CE | None |
| CSA File # | None |
| RoHS Status | Meets RoHS Chemical Restrictions - No CE (See RoHS Statement Below) |
| EU REACH | View EU REACH document |
| Other | RoHS Statement |

Dimensional Drawings



2D Drawing PDF Link:
<https://cdn.automationdirect.com/static/drawings/SCE-L9366ELJ.pdf>
See store item page for other formats.