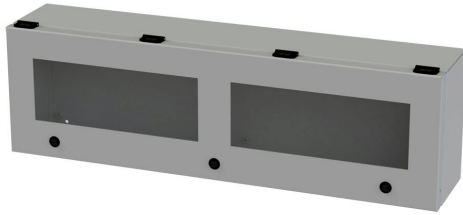


# SCE-L9306ELJW Cut Sheet



Saginaw wiring trough, 6 x 9 x 30in (HxDxL), NEMA 3R/4/12/13, wall mount, carbon steel, ANSI 61 gray, powder coat finish, single-door, polycarbonate window.

For complete product information, please see this item on our store at the following link:



<https://www.automationdirect.com/pn/SCE-L9306ELJW>

## Technical Specifications

<b>Brand</b>	Saginaw
<b>Item</b>	Wiring trough
<b>Series</b>	Enviroline Junction
<b>NEMA Rating</b>	3R/4/12/13
<b>IP Rating</b>	IP66
<b>Nominal Enclosure Dimensions</b>	9 x 30 x 6in (HxWxD)
<b>Enclosure Height</b>	9.00in
<b>Enclosure Depth</b>	6.19in
<b>Enclosure Length</b>	30.00in
<b>Mounting</b>	Wall

<b>Integral Mounting Feet</b>	No
<b>Knockouts</b>	No
<b>Material</b>	Carbon steel
<b>Color</b>	ANSI 61 gray
<b>Finish</b>	Powder coat
<b>Cover Type</b>	Single-door
<b>Latch Type</b>	1/4-turn semi-flush latch
<b>Window Material</b>	Polycarbonate
<b>Padlockable</b>	No

## Agency Approvals

<b>UL Listed File #</b>	E69392
<b>UL Recognized File #</b>	None
<b>UL Hazardous File #</b>	None
<b>CE</b>	None
<b>CSA File #</b>	None
<b>RoHS Status</b>	Meets RoHS Chemical Restrictions - No CE (See RoHS Statement Below)
<b>EU REACH</b>	<a href="#">View EU REACH document</a>
<b>Other</b>	<a href="#">RoHS Statement</a>

## Dimensional Drawings



2D Drawing PDF Link:  
<https://cdn.automationdirect.com/static/drawings/SCE-L9306ELJW.pdf>  
See store item page for other formats.