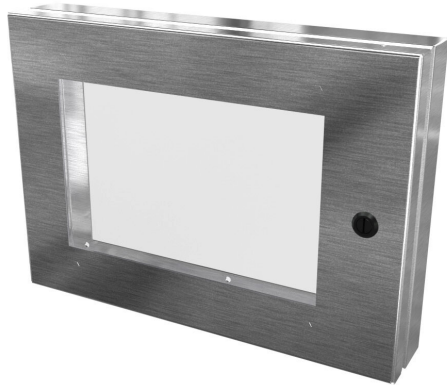


SCE-HWK1014SS Cut Sheet



Saginaw universal deep-hinged door, NEMA 3R/4/4X/12/13, 10.00 x 14.00 x 2.63in, 304 stainless steel, concealed hinges, polycarbonate window. For use with wall-mount enclosures.

For complete product information, please see this item on our store at the following link:



<https://www.automationdirect.com/pn/SCE-HWK1014SS>

Technical Specifications

Brand	Saginaw
Item	Universal deep-hinged door
NEMA Rating	3R/4/4X/12/13
Door Size	10.00 x 14.00 x 2.63in
Door Material	304 stainless steel
Hinge Type	Concealed hinges
Finish	#4 brush
Cutout Size	7.50 x 11.50in

Number of Hinges Per Door	2
Latch Type	1/4-turn semi-flush latch
Gasket Type	Oil-resistant neoprene
Window Material	Polycarbonate
Window Size	6.00 x 9.38in
For Use With	Wall-mount enclosures

Agency Approvals

UL Listed File #	E69392
UL Recognized File #	None
UL Hazardous File #	None
CSA File #	None
RoHS Status	Meets RoHS Chemical Restrictions - No CE (See RoHS Statement Below)
EU REACH	View EU REACH document
Other	RoHS Statement

Dimensional Drawings



2D Drawing PDF Link:
<https://cdn.automationdirect.com/static/drawings/SCE-HWK1014SS.pdf>
See store item page for other formats.