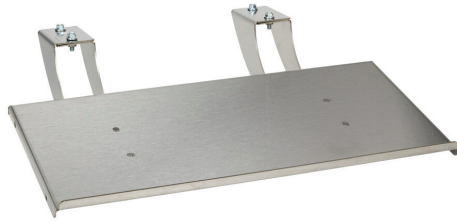


SCE-HMIKBSSS Cut Sheet

Saginaw HMI keyboard shelf, 18in width, stainless steel, #4 brush finish. Mounting hardware included.

For complete product information, please see this item on our store at the following link:



<https://www.automationdirect.com/pn/SCE-HMIKBSSS>

Technical Specifications

Brand	Saginaw
Item	HMI keyboard shelf
Shelf Type	Stationary
Size	18in width
Material	Stainless steel
Finish	#4 brush
Vented	No
Includes	Mounting hardware

Agency Approvals

UL Listed File #	None
UL Recognized File #	None
UL Hazardous File #	None
CSA File #	None
RoHS Status	Meets RoHS Chemical Restrictions - No CE (See RoHS Statement Below)
EU REACH	View EU REACH document
Other	RoHS Statement

Dimensional Drawings



2D Drawing PDF Link:
<https://cdn.automationdirect.com/static/drawings/2d/SCE-HMIKBSSS.pdf>
See store item page for other formats.