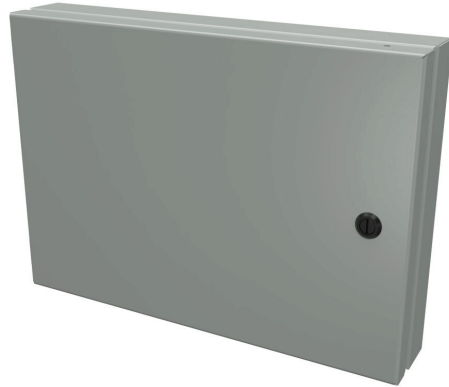


SCE-HA1014 Cut Sheet



Saginaw universal deep-hinged door, NEMA 3R/4/12/13, 10.00 x 14.00 x 2.63in, carbon steel, ANSI 61 gray, concealed hinges. For use with wall-mount enclosures.

For complete product information, please see this item on our store at the following link:



<https://www.automationdirect.com/pn/SCE-HA1014>

Technical Specifications

| | |
|----------------------|----------------------------|
| Brand | Saginaw |
| Item | Universal deep-hinged door |
| NEMA Rating | 3R/4/12/13 |
| Door Size | 10.00 x 14.00 x 2.63in |
| Door Material | Carbon steel |
| Hinge Type | Concealed hinges |
| Color | ANSI 61 gray |

| | |
|----------------------------------|---------------------------|
| Finish | Powder coat |
| Cutout Size | 7.50 x 11.50in |
| Number of Hinges Per Door | 2 |
| Latch Type | 1/4-turn semi-flush latch |
| Gasket Type | Oil-resistant neoprene |
| For Use With | Wall-mount enclosures |

Agency Approvals

| | |
|-----------------------------|---|
| UL Listed File # | E69392 |
| UL Recognized File # | None |
| UL Hazardous File # | None |
| CSA File # | None |
| RoHS Status | Meets RoHS Chemical Restrictions - No CE (See RoHS Statement Below) |
| EU REACH | View EU REACH document |
| Other | RoHS Statement |

Dimensional Drawings



2D Drawing PDF Link:
<https://cdn.automationdirect.com/static/drawings/SCE-HA1014.pdf>
See store item page for other formats.