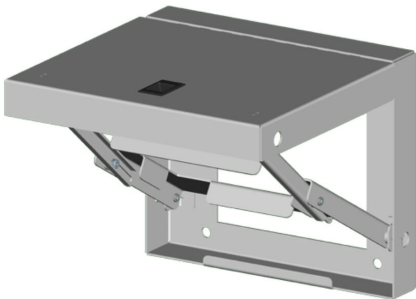


# SCE-FS1818LG Cut Sheet



Saginaw enclosure folding shelf, 18 x 18in, carbon steel, RAL 7035 light gray, powder coat finish. Mounting hardware included. Installs inside or outside of enclosure.

For complete product information, please see this item on our store at the following link:



<https://www.automationdirect.com/pn/SCE-FS1818LG>

## Technical Specifications

Brand	Saginaw
Item	Enclosure folding shelf
Size	18 x 18in
Material	Carbon steel
Color	RAL 7035 light gray
Finish	Powder coat
Includes	Mounting hardware
Application	Installs inside or outside of enclosure

## Agency Approvals

UL Listed File #	None
UL Recognized File #	None
UL Hazardous File #	None
CE	None
CSA File #	None
RoHS Status	Meets RoHS Chemical Restrictions - No CE (See RoHS Statement Below)
EU REACH	<a href="#">View EU REACH document</a>
Other	<a href="#">RoHS Statement</a>

## Dimensional Drawings



2D Drawing PDF Link:  
<https://cdn.automationdirect.com/static/drawings/SCE-FS1818LG.pdf>  
See store item page for other formats.