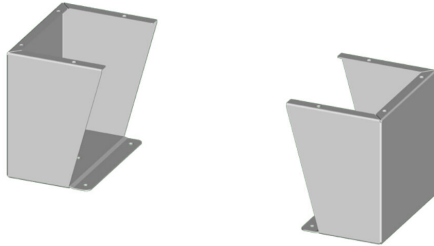


SCE-FK2416SS Cut Sheet

Saginaw floor stand kit, 24in height, 304 stainless steel, #4 brush finish. For use with 16in deep enclosures. Includes (2) floor stands and mounting hardware.

For complete product information, please see this item on our store at the following link:



<https://www.automationdirect.com/pn/SCE-FK2416SS>

Technical Specifications

| | |
|---------------------|--|
| Brand | Saginaw |
| Item | Floor stand kit |
| Height | 24in |
| Width | 9.13in |
| Depth | 16in |
| Material | 304 stainless steel |
| Finish | #4 brush |
| For Use With | 16in deep enclosures |
| Kit Includes | (2) floor stands and mounting hardware |

Agency Approvals

| | |
|-----------------------------|---|
| UL Listed File # | None |
| UL Recognized File # | None |
| UL Hazardous File # | None |
| CE | None |
| CSA File # | None |
| RoHS Status | Meets RoHS Chemical Restrictions - No CE (See RoHS Statement Below) |
| EU REACH | View EU REACH document |
| Other | RoHS Statement |

Dimensional Drawings



2D Drawing PDF Link:
<https://cdn.automationdirect.com/static/drawings/SCE-FK2416SS.pdf>
See store item page for other formats.